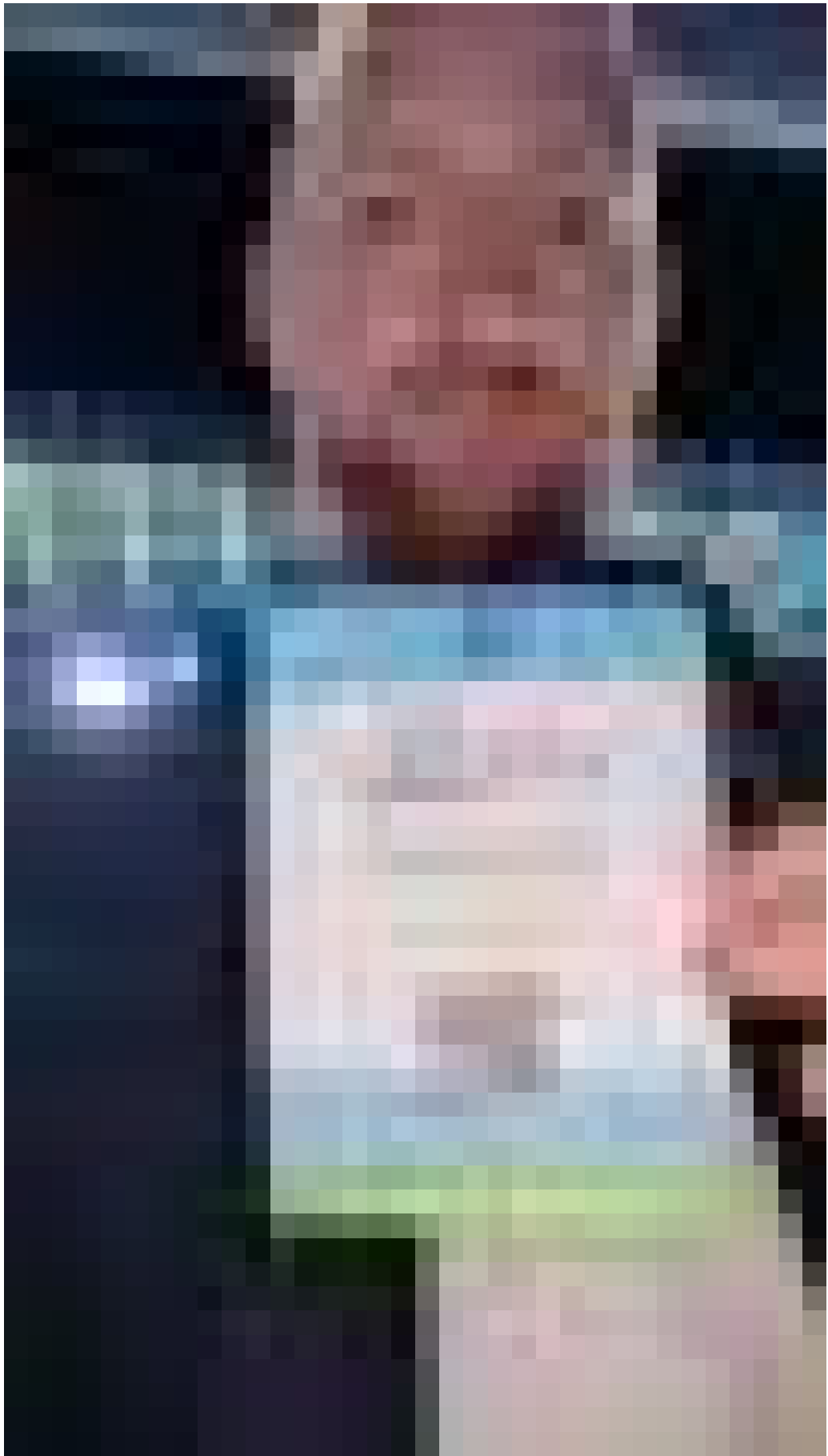


deployteq

deployteq

[Help Center](#) > [Community](#) > [Verbetervoorstellen](#) > [Add 'Export View' button to profiles](#)

Add 'Export View' button to profiles [Open Discussion](#)



• Gareth Sweet

- **Forum name:** #Verbetervoorstellen

Once you run a profile, click send customers, and have selected the columns you wish to see, an 'Export View' button would then download the customers and selected customers to your local machine.